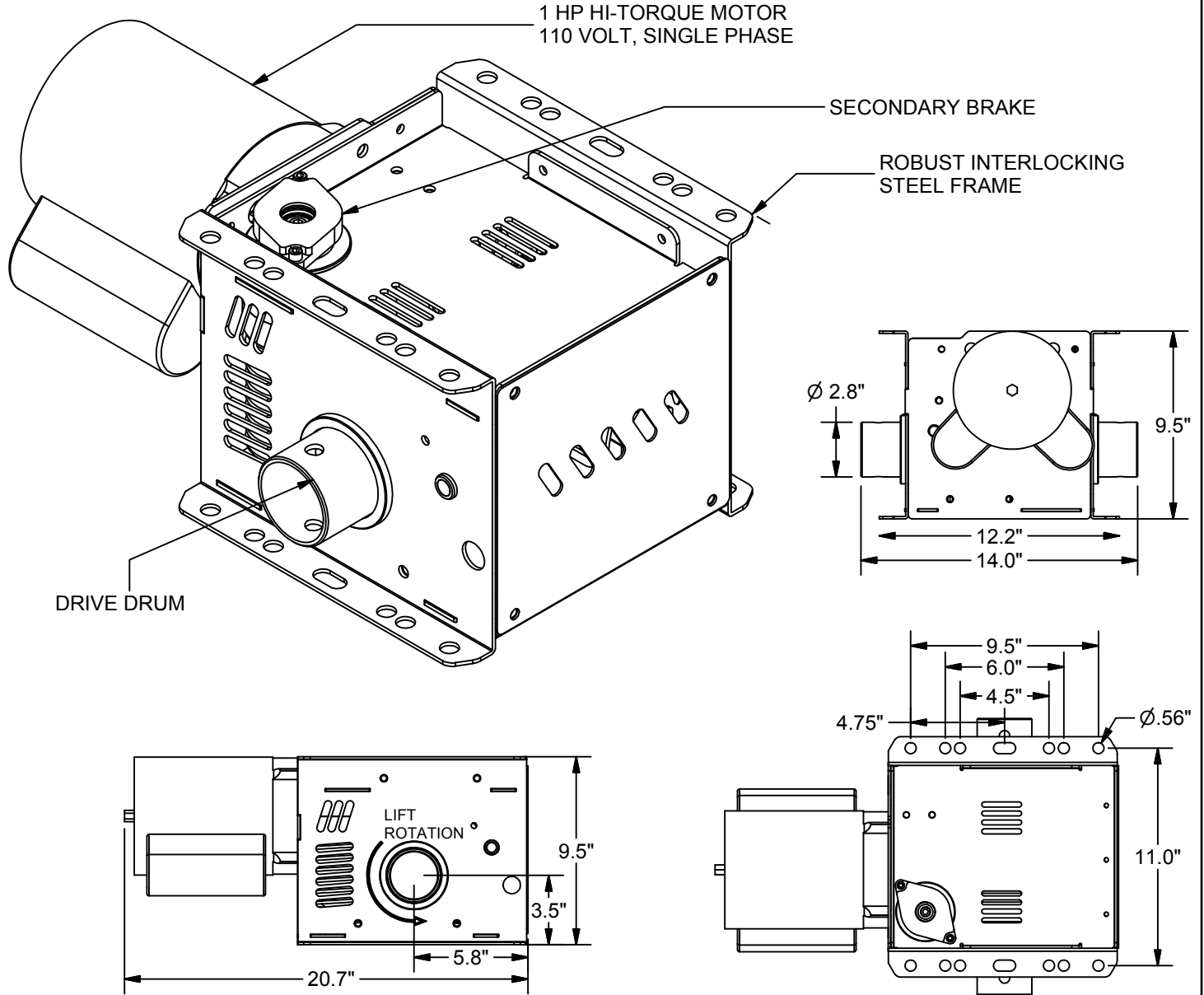




CW-1800 TorkWinch® ELECTRIC CURTAIN POSITIONING WINCH



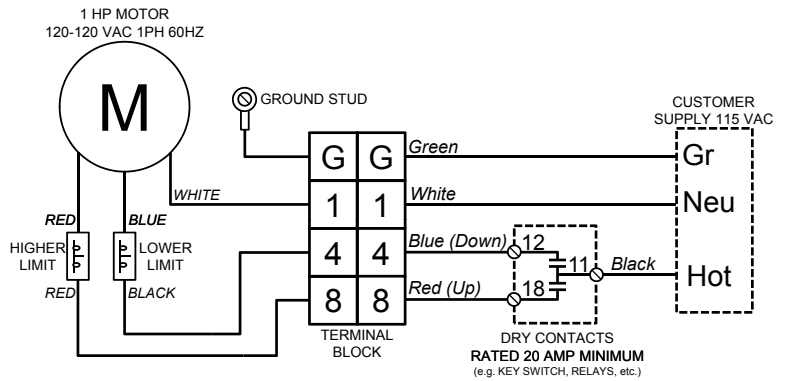
PROJECT NAME _____

PROJECT NUMBER _____

ARCHITECT _____

CONTRACTOR _____

NOTES _____



CW-1800
ELECTRIC CURTAIN POSITIONING WINCH

© COPYRIGHT 2014 JAYPRO SPORTS, LLC. ALL RIGHTS RESERVED
THIS PRINT IS THE PROPERTY OF JAYPRO SPORTS, LLC. AND MAY NOT BE REPRODUCED WITHOUT WRITTEN PERMISSION

www.jaypro.com
(800) 243-0533
976 Hartford Turnpike
Waterford, CT 06385 USA

Sheet 1 of 2



SPECIFICATION SHEET

The curtain positioning CW-1800 *TorkWinch*[®] shall be a definite purpose electric winch designed specifically for use on gymnasium divider curtain applications. The CW-1800 shall be designed to the highest standards in terms of safety, simplicity of installation, space efficiency, attractive appearance and ease of use. The CW-1800 shall be UL listed.

The CW-1800 shall be maintenance free and shall not have any belts, chains or oil baths. Proprietary composite self-lubricating gears provide lubrication. The interlocking powder coated steel frame shall be semi enclosed for safety.

The CW-1800 drive drum is a hollow bore style which shall position the curtain by turning a 2-3/8" drive pipe pinned to the drum with (2) 1/2" dia pins. A 1HP, instantly reversing, 115 volt, single-phase electric torque motor utilizing a 3-wire control system shall drive the CW-1800. The curtain winch shall deliver at least 1800 inch lbs. of torque (lifts 600 lbs. of curtain fabric) on 5" diameter spools. The winch shall be designed for vertical lifting of the curtain.

Double, self-locking worm gearing plus passive uni-directional brakes shall be provided with a unique built-in Posilok™ over-speed arrest system. The CW-1800 shall have integral adjustable upper and lower travel limit switches making the setting of stop positions easy and accurate. The CW-1800 shall allow for 80 drum revolutions or 50 ft of lift using a 2-3/8" drive pipe. The CW-1800 shall come standard with a flush mounted, 3-position key switch insuring that the motor cannot be switched both up and down simultaneously. Remote receivers, MEC PAD, or ETEC control systems can optionally control the CW-1800. Wiring of all electrical components shall be in accordance with national and local electrical codes, as well as specific wiring instructions provided by Jaypro.

The CW-1800 shall utilize a specially designed torque motor for increased motor reliability, instant reverse and low maximum current draw, (FLA 13 amps). The winch shall also incorporate a built in thermal overload with automatic reset.

CW-1800 shall be furnished with two mounting flanges with hole spacing of 6" x 11" or 4-1/2" x 11" on either side of the winch. Winch may be hung right side up or upside down and has a definite lifting / lowering direction.

WARRANTY

CW-1800 shall have a one (1) year replacement warranty on all defects in material and workmanship. Any winch without this warranty does not meet these specifications and should not be considered equal.

OPTIONAL CONTROLLERS

- MEC PAD Master Equipment Controller (*Refer to MEC-99 Specification Sheet*)
- ETEC Easy Touch Equipment Controller (*Refer to ETEC Specification Sheet*)
- TMX-DRX Radio Controller (*Refer to TMX-DRX Specification Sheet*)