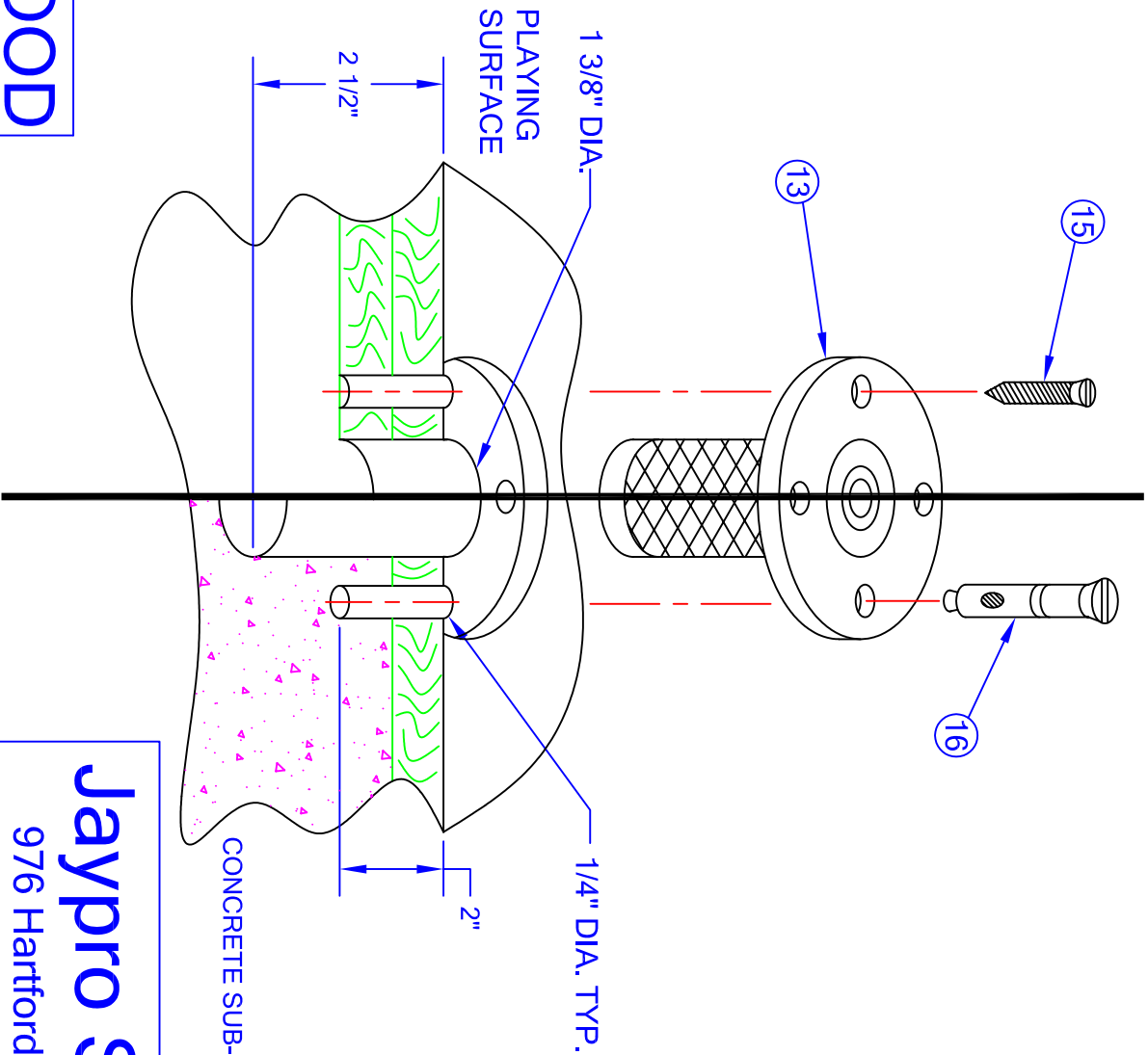


USE THESE DRAWINGS AND CONFIGURATIONS ON WOOD OR WOOD DIRECTLY OVER CONCRETE FLOORS ONLY



WOOD ONLY

- PLEASE NOTE:
- 1) FOR SAFE OPERATION AND CONTINUED HIGH PERFORMANCE FROM THIS EQUIPMENT, INSPECTION AND MAINTENANCE MUST BE PERFORMED BEFORE EACH USE
 - 2) USE OF THIS EQUIPMENT OTHER THAN INTENDED, MAY BE HAZARDOUS.
 - 3) ALTERATION OR MODIFICATION OF EQUIPMENT MAY BE HAZARDOUS. FOR REPAIR OR REPLACEMENT, PLEASE CALL YOUR DEALER

WOOD DIRECTLY OVER CONCRETE

PLEASE NOTE:
RECESS PLAYING SURFACE
3 1/4" DIA. X 1/4" DEEP
FOR FLUSH FIT TOP PLATE.

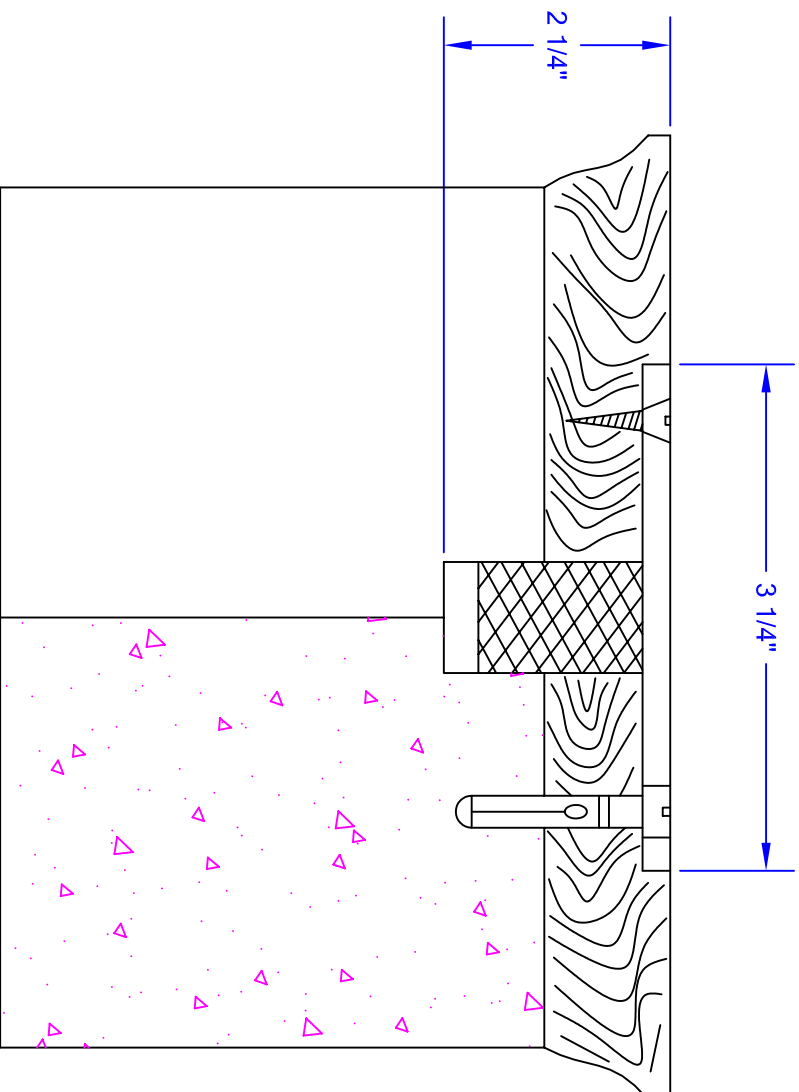
Jaypro Sports

976 Hartford Turnpike
Waterford, CT 06385 USA
(800)243-0533
(800)988-3363 Fax
www.jaypro.com

MODEL NO.:
FP-50

PRODUCT NAME:
FLOOR PLATE ASSEMBLY

DRAWN BY: JAC
EFFECTIVE DATE:
5-11-05



WOOD ONLY

WOOD OVER
CONCRETE

Jaypro Sports

976 Hartford Turnpike
 Waterford, CT 06385 USA
 (800)243-0533
 (800)988-3363 Fax
 www.jaypro.com

MODEL NO.:
FP-50

PRODUCT NAME:

DRAWN BY: JAC

EFFECTIVE DATE:
 9-21-04

JAYPRO SPORTS

INSTALLATION INSTRUCTIONS FP-50, FLOOR PLATE

<u>PIECE NO.</u>	<u>PART NO.</u>	<u>DESCRIPTION</u>	<u>QUANTITY</u>
1	FP501	FLOOR PLATE ASSEMBLY	1 EA
2	HS314	#14 x 1 ½" WOOD SCREW	4 EA
3	HM5097	¼" x 2" STEEL FLAT HEAD SLEEVE ANCHOR	4 EA

- 1) LOCATE AND MARK CENTER LOCATION OF THE FLOOR PLATE USING THE LAYOUT DIAGRAM PROVIDED WITH YOUR EQUIPMENT. VERIFY ALL DIMENSIONS CAREFULLY BEFORE BEGINNING THE INSTALLATION.
- 2) USING A 1 3/8" DIAMETER DRILL BIT, (A MASONRY BIT MAY BE REQUIRED) DRILL THROUGH THE PLAYING SURFACE TO THE DEPTH INDICATED ON THE DIAGRAM. RECESS THE WOOD PLAYING SURFACE TO A DIAMETER OF 3 ¼" AND A DEPTH OF 1/4" SO THE TOP PLATE WILL BE FLUSH WITH YOUR SURFACE.
- 3) PLACE THE FLOOR PLATE IN POSITION AND MARK THE LOCATION OF THE ANCHOR SCREWS USING THE TOP PLATE AS A TEMPLATE. IF ONLY USING THE WOOD SCREWS, DRILL 9/64" PILOT HOLES, THEN ANCHOR THE FLOOR PLATE WITH THE #14 x 1 ½" WOOD SCREWS PROVIDED. IF SUB-FLOOR IS CONCRETE, USE THE ¼" SLEEVE ANCHORS TO ASSURE ADEQUATE HOLDING SUPPORT. DRILL ¼" DIAMETER x 2" HOLES AS SHOWN IN THE DIAGRAM. ASSEMBLE FLOOR PLATE INTO POSITION USING THE ¼" SLEEVE ANCHORS PROVIDED.
- 4) VERIFY THAT THE FLOOR PLATE IS SECURELY ASSEMBLED BEFORE LOADING WITH HEAVY OR HIGHLY TENSIONED EQUIPMENT.