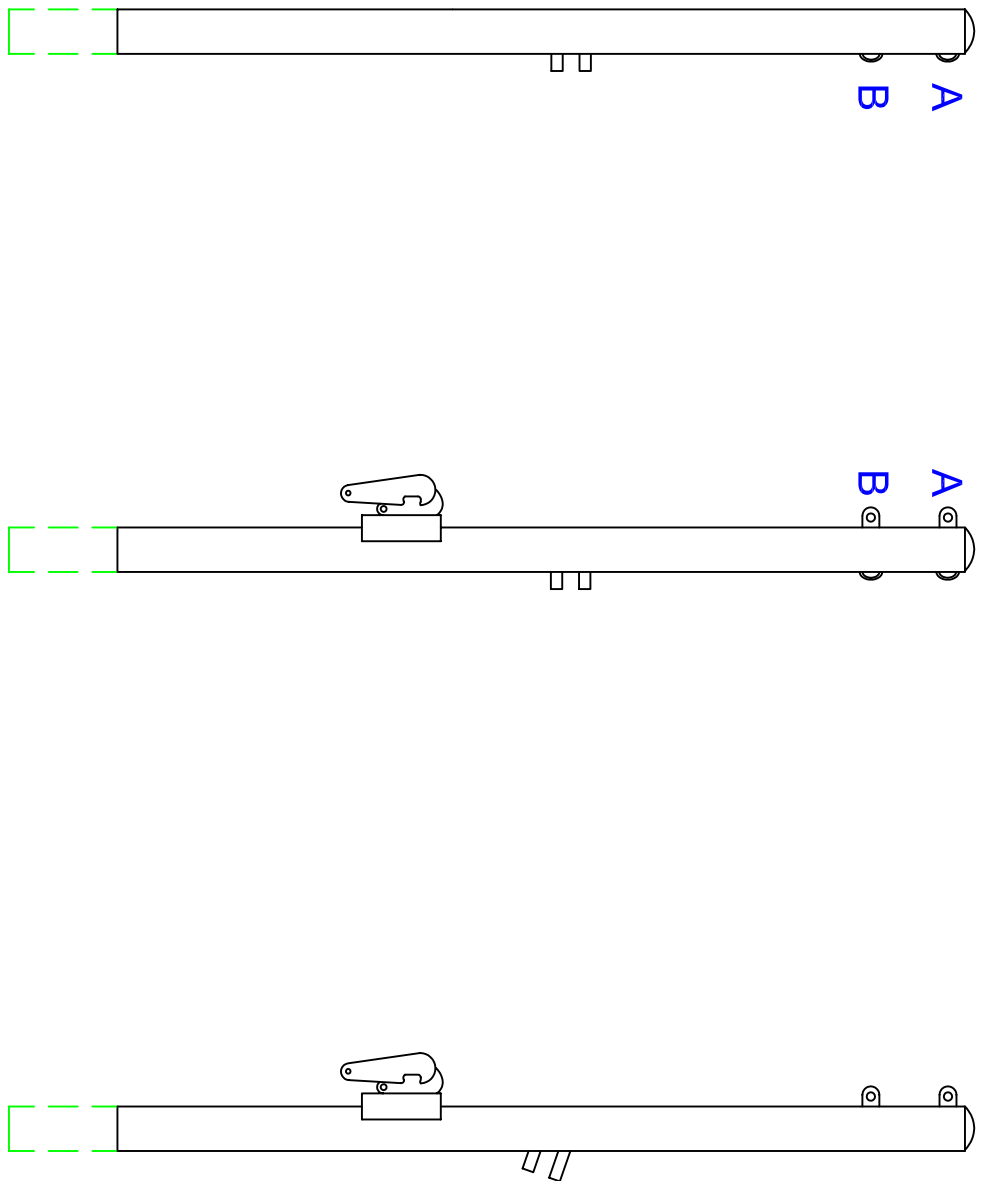


**IMPORTANT: THE SIDE BY SIDE SYSTEMS MUST BE TENSIONED SIMULTANEOUSLY TO PREVENT OVERLOADING THE TWO END STANDARDS.**



**PLEASE NOTE:**

- 1) FOR SAFE OPERATION AND CONTINUED HIGH PERFORMANCE FROM THIS EQUIPMENT, INSPECTION AND MAINTENANCE MUST BE PERFORMED BEFORE EACH USE
- 2) USE OF THIS EQUIPMENT OTHER THAN INTENDED, MAY BE HAZARDOUS.
- 3) ALTERATION OR MODIFICATION OF EQUIPMENT MAY BE HAZARDOUS. FOR REPAIR OR REPLACEMENT, PLEASE CALL YOUR DEALER

**Jaypro Sports**

976 Hartford Turnpike  
Waterford, CT 06385 USA  
(800)243-0533  
(800)988-3363 Fax  
www.jaypro.com

MODEL NO.:  
**PVB-100C**

PRODUCT NAME:  
**POWER VOLLEYBALL  
CENTER STANDARD**

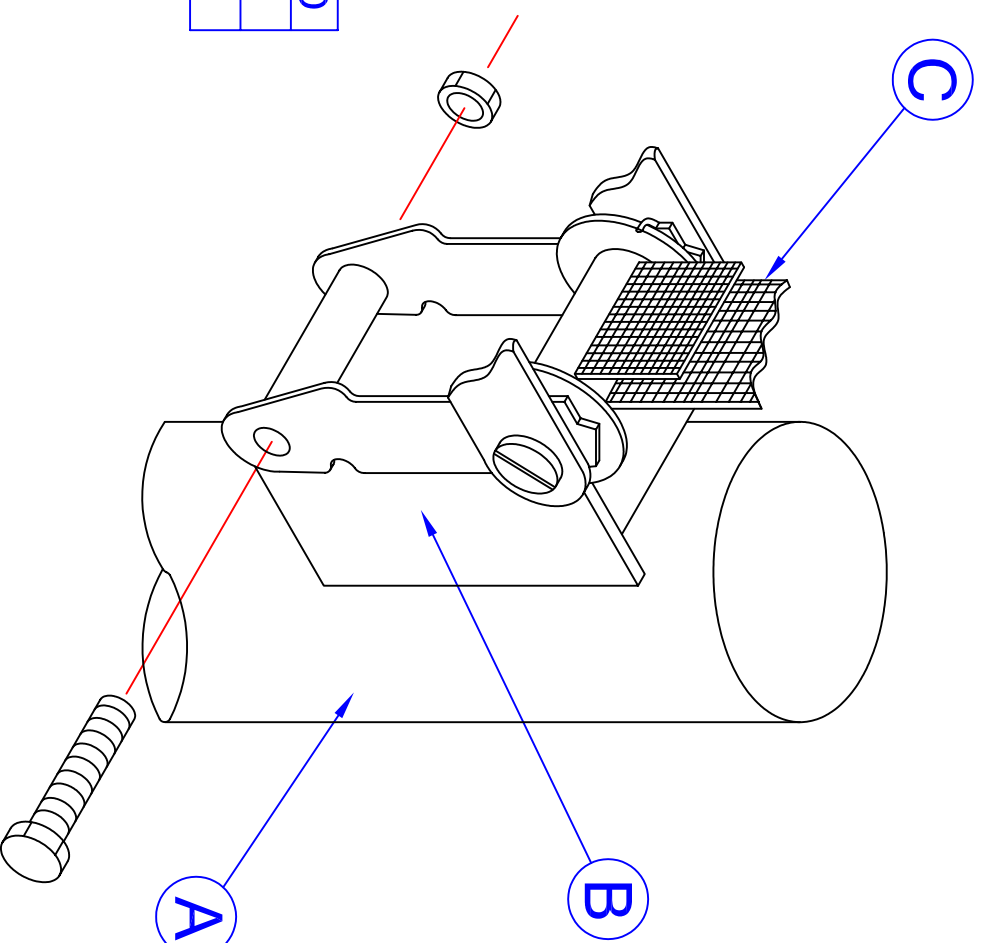
DRAWN BY: JAC

EFFECTIVE DATE:  
**5-13-03**

NOTE:

HEX HEAD SCREW  
LOCKS UNDER PIN  
ON MOUNTING  
BRACKET.

# LARGE BUCKLE



A	VOLLEYBALL STANDARD
B	BUCKLE
C	LEADER STRAP

## BUCKLE ASSEMBLY INSTRUCTIONS

REMOVE NUT AND BOLT ASSEMBLY  
FROM BUCKLE (B). SLIDE BUCKLE  
UNDER TAB ON MOUNTING BRACKET  
(A). POSITION BUCKLE, INSERT  
BOLT AND REPLACE NUT.  
TIGHTEN SECURELY.

# Jaypro Sports

976 Hartford Turnpike  
Waterford, CT 06385 USA  
(800)243-0533  
(800)988-3363 Fax  
www.jaypro.com

MODEL NO.:

PRODUCT NAME:

BUCKLE ASSEMBLY

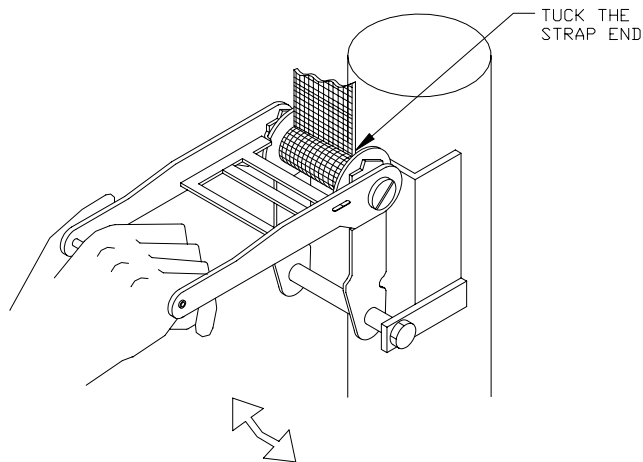
DRAWN BY: JAC

EFFECTIVE DATE:  
3-31-03



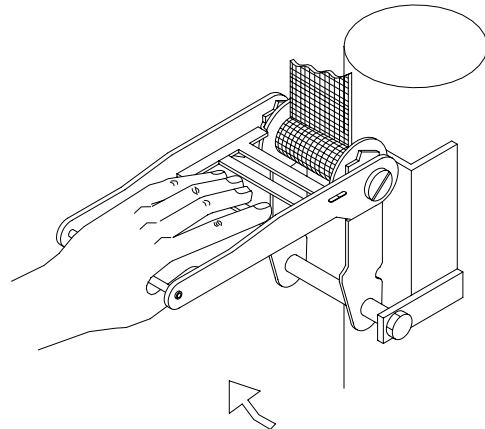
#### TO APPLY NET TENSION:

FEED THE LEADER STRAP THRU THE SLOT IN THE BUCKLE SHAFT AND TUCK THE END AS SHOWN. GENTLY CRANK THE HANDLE UP AND DOWN TO TENSION THE NET.



#### TO RELEASE NET TENSION:

HOLD BUCKLE HANDLE AS ILLUSTRATED, GRASP AND PULL THE LOCK RELEASE BAR AND RAISE THE HANDLE TO THE FULL UPWARD POSITION TO RELEASE THE TENSION.



#### HOW TO PROPERLY USE THE NET TENSIONING BUCKLE

THIS POWER VOLLEYBALL SYSTEM IS EQUIPPED WITH A TENSION BUCKLE PREMOUNTED ON ONE OF THE UPRIGHTS. THE BUCKLE IS USED TO APPLY TENSION TO THE TOP CABLE OF THE NET.

#### **TO APPLY NET TENSION:**

FEED THE LEADER STRAP DOWN THRU THE HORIZONTAL SLOT IN THE SHAFT OF THE BUCKLE. WRAP THE STRAP HALFWAY AROUND THE SHAFT AND TUCK THE END BETWEEN THE SHAFT AND THE STRAP TO HOLD IT IN PLACE. CRANK THE HANDLE UP AND DOWN A FEW TIMES UNTIL THE STRAP IS SECURELY WRAPPED AROUND THE SHAFT OF THE BUCKLE (APPROXIMATELY 1 ½ TO 2 REVOLUTIONS). NOTE THAT THE BUCKLE TENSIONS ON THE UP-STROKE ONLY: NOT THE DOWN-STROKE.

#### **TO RELEASE NET TENSION:**

HOLD THE BUCKLE HANDLE AS SHOWN IN THE ILLUSTRATION TO THE RIGHT, GRASP THE LOCK RELEASE BAR WITH YOUR FINGERS, PULL THE BAR TOWARD YOUR HAND AND CRANK THE HANDLE TO ITS UPPERMOST POSITION (STRAIGHT UP AND DOWN).

**CAUTION!! WHEN THE TENSION RELEASES, THE LEADER STRAP AND THE VOLLEYBALL NET WILL SUDDENLY COLLAPSE. ALTHOUGH THE NOISE AND MOTION ASSOCIATED WITH THE RELEASE OF THE TENSION MAY BE SURPRISING AT FIRST, IT POSES NO DANGER TO THE USER.**

# **JAYPRO SPORTS**

PVB-100C

## **LIST OF MATERIALS**

<b><u>PIECE NO.</u></b>	<b><u>PART NO.</u></b>	<b><u>DESCRIPTION</u></b>	<b><u>QTY.</u></b>
1	PVB100C1	CENTER UPRIGHT	1
2	PVB101A	LEADER STRAP	1
3	PVB-100CP	POST PAD	1
4	HM5054	5/16" SNAP HOOK	1
5	HM5044	TOP CABLE BUCKLE	1
6	PVBN-1	VOLLEYBALL NET	1

## **SAFE USE AND HANDLING**

- 1) Use protective padding around the standards when using this volleyball system.
- 2) Before every use, check all fasteners, clips and straps to look for worn or damaged parts.
- 3) These uprights are very heavy and we recommend that they be moved only with two qualified adults.

## **ASSEMBLY INSTRUCTIONS**

### **READ ALL DIRECTIONS CAREFULLY BEFORE BEGINNING ASSEMBLY**

- 1) Refer to "Power Volleyball Double Court Lay-Out" diagram for typical floor sleeve placement. For best results, get the services of a qualified local contractor to install your floor sleeves.
- 2) Assemble top cable buckle (3) with leader strap (2) onto the center standard upright (1). Refer to "Buckle Assembly" illustration.
- 3) The assembly and use of the center standard is the same as for the end standards. The net and antennae are attached the same. Refer to the instructions and illustrations provided with the PVB-1000/1000LS system.

## **INSTALLATION AND USE CONSIDERATIONS**

- 1) THIS UNIT IS DESIGNED FOR HIGH-LEVEL COMPETITION PLAY. CONSEQUENTLY, WHEN INSTALLED AND OPERATIONAL, THE UNIT IS SUBJECT TO CONSIDERABLE STRESS LOADS. IT IS ESSENTIAL TO INSPECT ALL PARTS BEFORE EACH USE.
- 2) DO NOT USE THIS EQUIPMENT WITHOUT THE PROTECTIVE UPRIGHT PADDING PROPERLY FASTENED IN PLACE.
- 3) A FEW DROPS OF LIGHT LUBRICATING OIL APPLIED PERIODICALLY TO THE MOVING PARTS ON THE CABLE BUCKLE WILL HELP ASSURE SMOOTH AND EASY OPERATION.
- 4) A LIGHT COATING OF LUBRICATING GREASE APPLIED TO THE INSIDE OF EACH FLOOR SLEEVE WILL MAKE THE REMOVAL OF EACH UPRIGHT EASIER.