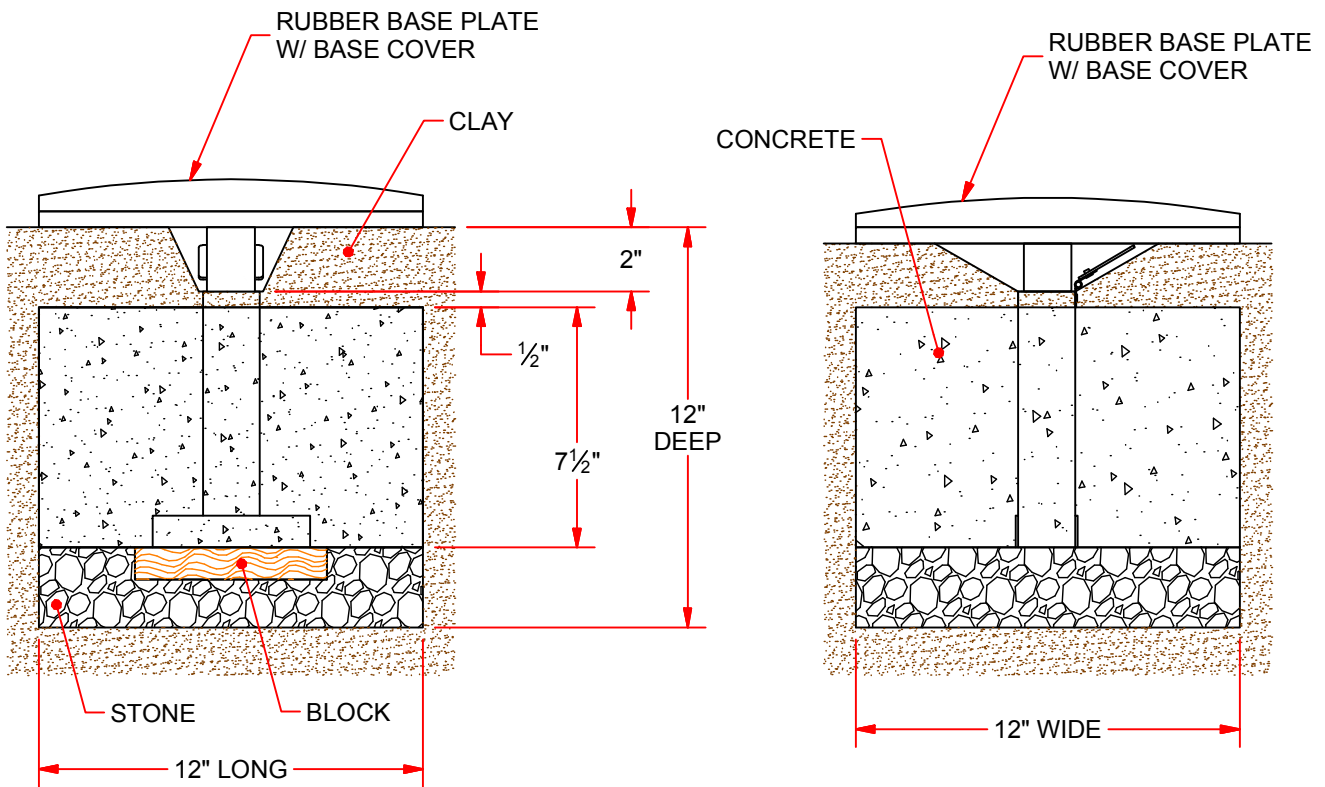


# REMOVABLE BASES

Installation Instructions Models: BB-700

1. Excavate hole at location required for your distance. (12" long x 12" wide x 12" deep)
2. Establish block to allow top of anchor 2" below top of mound.
3. Fill hole with stone to bottom of anchor.
4. Pour concrete to within 1/2" of top of anchor. 2-1/2" below top of playing surface. Allow to cure.
5. Fill void with clay allowing for taper to openings of anchor.

**MAINTENANCE:** Keep ground anchors covered with built-in hinge cap when not in use to prevent dirt from getting into the anchor. Remove any dirt that might obstruct the base from entering the ground anchor.



REV.	DESCRIPTION	DATE	BY
-	INITIAL RELEASE	2/26/2013	Moore T.

**BREAKAWAY BASE SET**  
BB-700



PHONE: 800.243.0533 (TOLL FREE)  
860.447.3001 (LOCAL)

FAX: 860.444.1779 (SALES)  
860.440.0628 (ENG.)

www.jaypro.com  
INNOVATION, PERFORMANCE  
AND COMMITMENT SINCE 1953  
JAYPRO SPORTS, LLC, 976 HARTFORD TURNPIKE, WATERFORD, CT 06385 USA

DRAWING NAME / PART NUMBER: <b>BB-700</b>	
DRAWN BY: Moore T.	ISSUE DATE: 2/25/2013
CHK'D BY: WVB	CHK DATE: 2/26/2013
SHEET: 1 OF 1	REV: -

THIS PRINT IS THE PROPERTY OF JAYPRO SPORTS, LLC.  
AND MAY NOT BE REPRODUCED WITHOUT WRITTEN PERMISSION