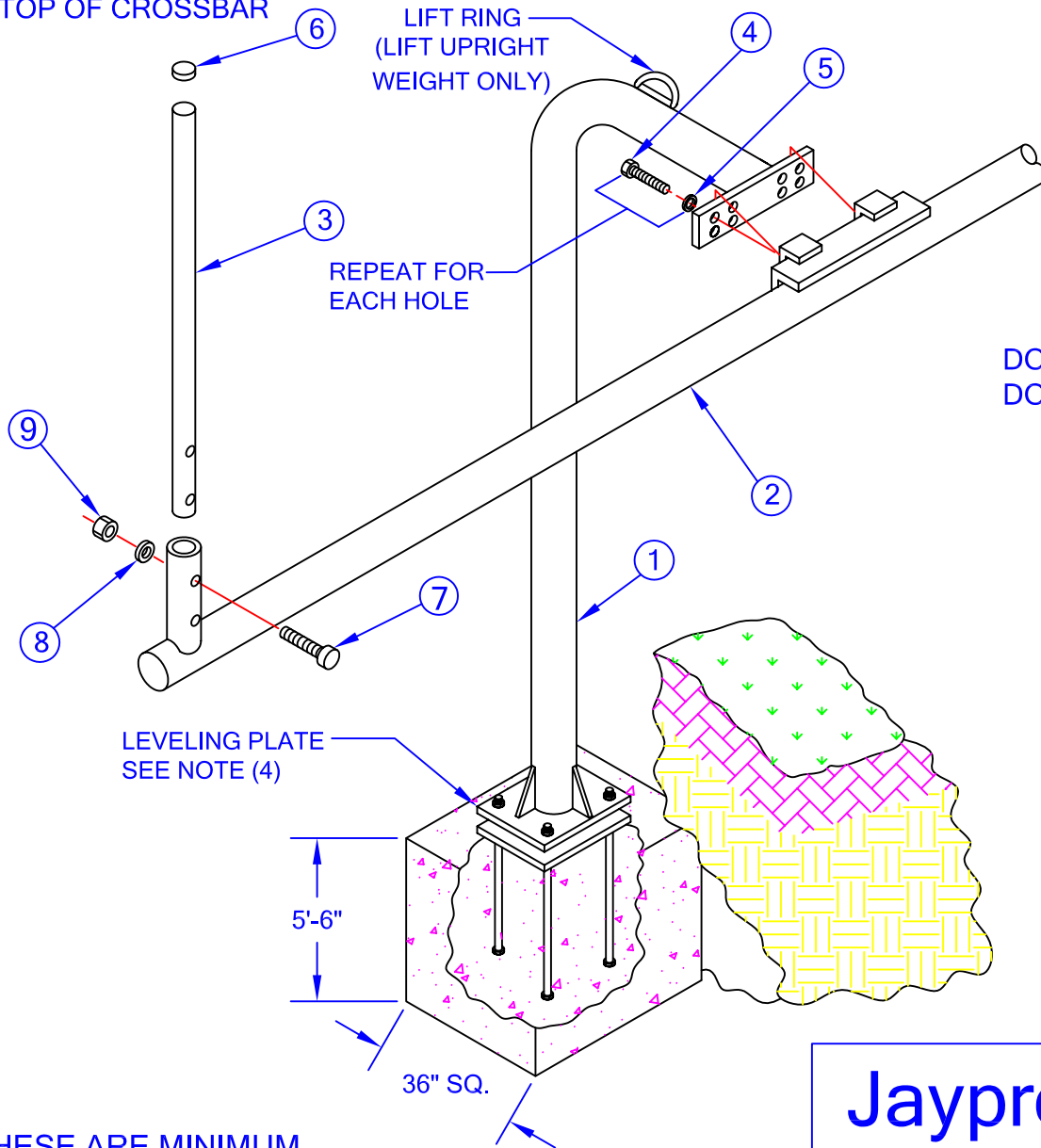


PLEASE NOTE:
10'-0" FROM GROUND LEVEL
TO TOP OF CROSSBAR



LIFT RING
(LIFT UPRIGHT
WEIGHT ONLY)

REPEAT FOR
EACH HOLE

LEVELING PLATE
SEE NOTE (4)

5'-6"

36" SQ.

THESE ARE MINIMUM
DIMENSIONS SUGGESTED
FOR AVERAGE SOIL CONDITIONS

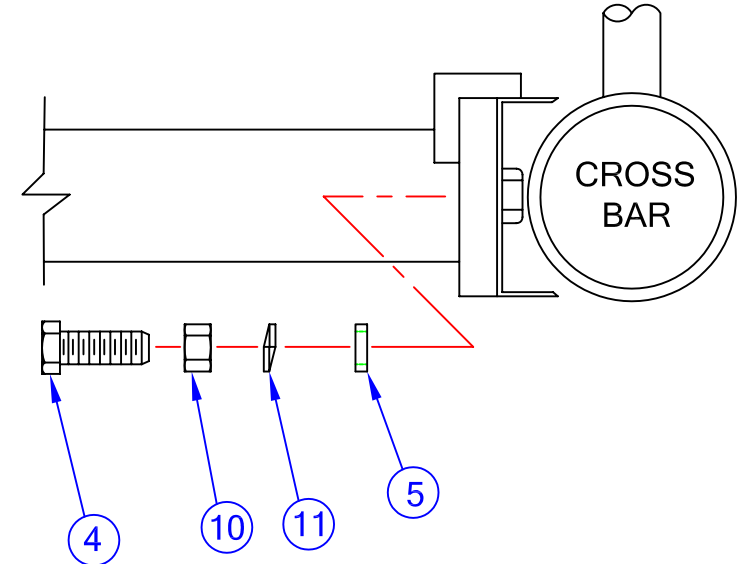
(USE APPROXIMATELY 2 CUBIC YD. OF
4000 LB. CONCRETE PER FOOTING)

PLEASE NOTE:

- 1) FOR SAFE OPERATION AND CONTINUED HIGH PERFORMANCE FROM THIS EQUIPMENT, INSPECTION AND MAINTENANCE MUST BE PERFORMED BEFORE EACH USE
- 2) USE OF THIS EQUIPMENT OTHER THAN INTENDED, MAY BE HAZARDOUS.
- 3) ALTERATION OR MODIFICATION OF EQUIPMENT MAY BE HAZARDOUS. FOR REPAIR OR REPLACEMENT, PLEASE CALL YOUR DEALER

CAUTION

DO NOT HANG FROM CROSSBAR
DO NOT CLIMB ON THIS UNIT



Jaypro Sports

976 Hartford Turnpike
Waterford, CT 06385 USA
(800)243-0533
(800)988-3363 Fax
www.jaypro.com

MODEL NO.:
FBGP-20

PRODUCT NAME:

HIGH SCHOOL OFFSET GOAL POST

DRAWN BY: JAC

EFFECTIVE DATE:
4-9-03

JAYPRO SPORTS

HIGH SCHOOL OFFSET GOAL POST, FBGP-20

LIST OF MATERIALS

IMPORTANT

FOR INSTALLATION DETAILS AND ASSEMBLY INSTRUCTIONS OF THE CONCRETE SUPPORT FOOTING, PLEASE REFER TO THE "FBGP-600 FOOTING INSTALLATION" DIAGRAM.

| <u>PIECE NO.</u> | <u>PART NO.</u> | <u>DESCRIPTION</u> | <u>QTY.</u> |
|------------------|-----------------|---------------------------------|-------------|
| 1 | FBGP-20US | BOTTOM UPRIGHT | 2 |
| 2 | FBGP-20XS | CROSSBAR | 2 |
| 3 | FBGP20TUS | TOP UPRIGHT | 4 |
| 4 | HS5067 | HEX HEAD SCREW 5/8"-11 x 2" | 8 |
| 5 | HW2043 | FLATWASHER 5/8" | 8 |
| 6 | EC0010 | 2" DOME CAP | 4 |
| 7 | HS291 | HEX HEAD SCREW 3/8"-16 x 2 1/2" | 8 |
| 8 | HW2047 | FLATWASHER 3/8" | 8 |
| 9 | HN265 | LOCKNUT 3/8"-16 | 8 |
| 10 | HN2112 | HEX NUT 5/8"-11 | 8 |
| 11 | HW340 | LOCKWASHER 5/8" | 8 |

CRITICAL REFERENCE DIMENSIONS

- 1) FROM GROUND LEVEL TO TOP OF CROSSBAR (2) IS 10".
- 2) FROM END LINE TO CENTER LINE OF BOTTOM UPRIGHT (1) IS 55".
- 3) DEPTH OF FOOTING HOLE IS 5'6". CONCRETE TO BE 4000 PSI MIX.
- 4) TOP OF CONCRETE IS 8" BELOW GROUND SURFACE.

ASSEMBLY INSTRUCTIONS

- 1) ASSEMBLE ANCHOR ROD TO LEVELING PLATE BY INSTALLING 7/8"-9 HEX NUT ONTO ANCHOR ROD AND ENGAGING 7" OF THREAD. SLIP ANCHOR ROD THRU HOLES IN LEVELING PLATE ORIENTING THE ANCHOR ROD. INSTALL SECOND 7/8"-9 HEX NUT ONTO ANCHOR ROD AND TIGHTEN DOWN SO THAT THE LEVELING PLATE IS NOW HELD SECURELY BETWEEN THE TWO NUTS. PLACE INTO CONCRETE, LEVEL AND SQUARE.
- 2) THE LIFT RING WELDED TO THE BOTTOM UPRIGHT (1) SHOULD BE USED TO SUPPORT THE WEIGHT OF THE BOTTOM UPRIGHT ONLY. IT IS NOT INTENDED TO BE USED TO SUPPORT THE ENTIRE ASSEMBLED STRUCTURE.
- 3) SET CROSSBAR CAREFULLY (2) ONTO BOTTOM UPRIGHT (1) AND ASSEMBLE USING 5/8"-11 x 2" HEX HEAD SCREWS (4), 5/8" HEX NUTS (10), LOCK WASHERS (11), AND FLATWASHERS (5). TIGHTEN EACH HEX HEAD SCREW THROUGH THE FLAT PLATE ON THE UPRIGHT (1) AND INTO THE C-CHANNEL ON THE CROSSBAR (2). THEN TIGHTEN THE 5/8"-11 HEX NUT (10) FIRMLY TO ENGAGE THE 5/8" LOCKWASHER AND SECURELY LOCK THE ASSEMBLY. DO NOT

APPLY ADDITIONAL WEIGHT TO THE CROSSBAR DURING INSTALLATION. THIS IS DANGEROUS AND THE WEIGHT COULD DAMAGE THE EQUIPMENT.

- 4) ASSEMBLE TOP UPRIGHTS (3) TO CROSSBAR (2) USING 3/8"-16 x 2 1/2" HEX HEAD SCREWS (7), 3/8" FLATWASHERS (8), AND 3/8"-16 LOCKNUTS (9). PLACE 2" DOME CAP (6) ON EACH TOP UPRIGHT.
- 5) WE STRONGLY RECOMMEND THAT A PROTECTIVE PAD BE PLACED AROUND THE BOTTOM UPRIGHT WHEN THE GOALS ARE IN USE.
- 6) ALL NUTS AND BOLTS SHOULD BE COATED WITH HEAVY GREASE. EACH STUD SHOULD BE PROTECTED BY PLACING HEAVY POLY FILM OVER GREASED STUDS AND WRAPPING WITH TAPE.

PAINING INSTRUCTIONS

THIS UNIT IS CONSTRUCTED WITH ALL HEAVY-DUTY GALVANIZED STEEL TUBING AND ALL OF THE WELDED CONNECTIONS HAVE BEEN COATED WITH RUST-LOK INHIBITOR. HOWEVER, IF THIS GOAL IS TO BE USED AS AN OFFICIAL GOAL THEN N.F.S.H.S.A. RULES REQUIRE THAT THE UNIT BE FINISHED IN EITHER WHITE OR YELLOW. FOR BEST RESULTS, PLEASE FOLLOW THE INSTRUCTIONS PROVIDED BELOW WHEN PAINTING THE GOAL.

- 1) ALL SURFACES MUST BE CLEANED OF DIRT, RUST, AND OIL. IF SURFACE SCRATCHES THRU THE GALVANIZED FINISH HAVE RUSTED, THEN WIRE BRUSH THE AFFECTED AREA TO COMPLETELY REMOVE THE RUST. WASH ALL SURFACES WITH LACQUER THINNER AS A FINAL PREPARATION STEP AND ALLOW TO FULLY DRY.
- 2) APPLY A QUALITY METAL PRIMER TO ALL SURFACES AND ALLOW TO DRY FULLY PER MANUFACTURER'S INSTRUCTIONS.
- 3) TOP COAT ALL SURFACES WITH A TOP QUALITY COMPATIBLE POLYURETHANE ENAMEL. IF NECESSARY, LIGHTLY SAND AND APPLY A SECOND COAT. ALLOW TO FULLY CURE PER MANUFACTURER'S INSTRUCTIONS BEFORE INSTALLING THE UNIT.