

WELDED D-RINGS FOR ATTACHING NET TOP CABLE (MEN'S AND WOMEN'S)

SIDELINE ANTENNAE (VBA-4) AND THE BOUNDARY TAPE (VA-22)

PVBN-1 TOP CABLE NET

USE POSITION 'A' FOR OFFICIAL MEN'S HEIGHT: 7' 11 5/8"

USE POSITION 'B' FOR OFFICIAL WOMEN'S HEIGHT 7' 4 1/8"

SNAP BUCKLES QUICKLY FASTEN NET TO UPRIGHTS

SNAP BUCKLE ALLOWS FOR QUICK NET ASSEMBLY TO UPRIGHT

TOP CABLE LEADER STRAP

3 1/2" DIA. STEEL ANCHOR UPRIGHT (PVB102)

PLAYING SURFACE LEVEL

3 1/2" DIA. STEEL WINCH UPRIGHT (PVB101)

SEE FLOOR SLEEVE INSTRUCTIONS FOR SLEEVE INSTALLATION

Jaypro Sports

976 Hartford Turnpike

Waterford, CT 06385 USA

(800)243-0533

(800)988-3363 Fax

www.jaypro.com

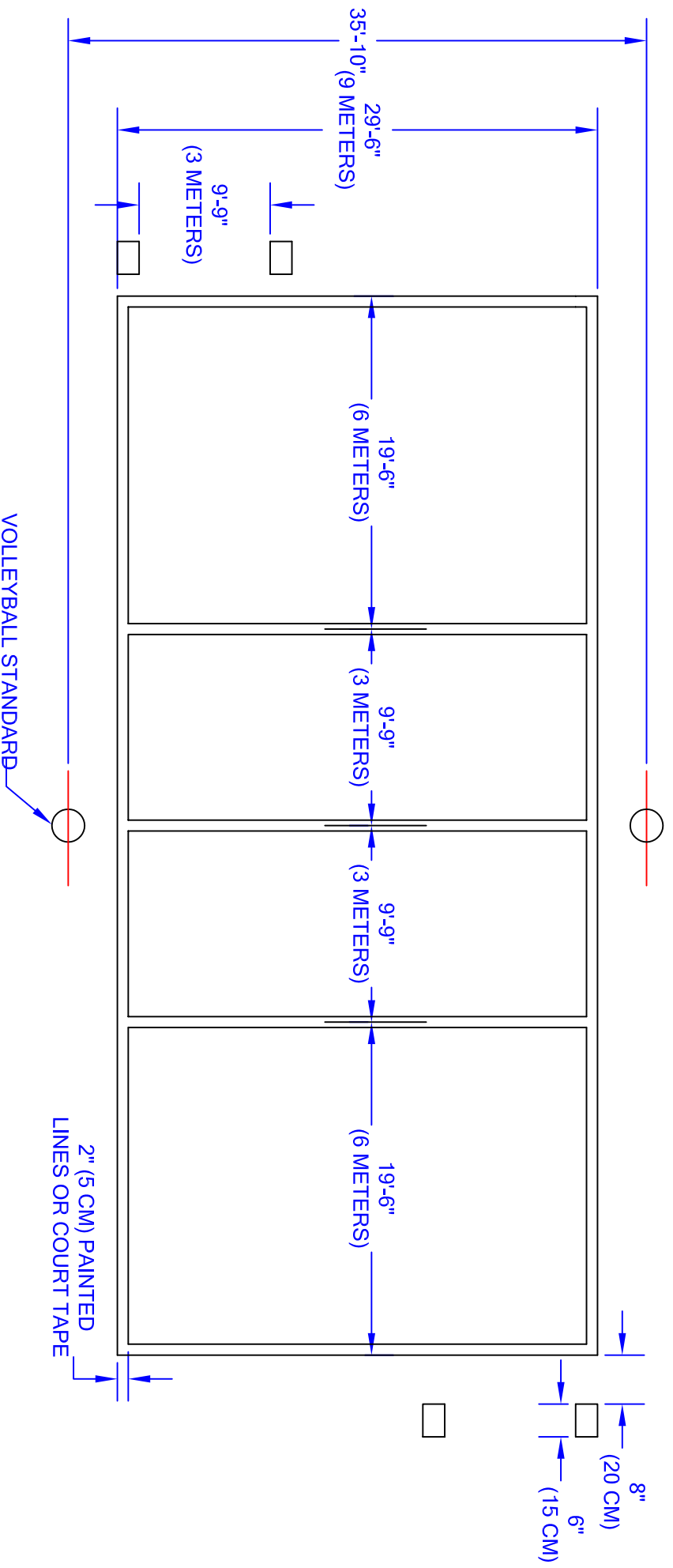
MODEL NO.:
PVB-1000

PRODUCT NAME:

CABLE CONFIGURATION

DRAWN BY: JAC

EFFECTIVE DATE:
10-14-04



IMPORTANT:

COURT DIMENSIONS SHOWN COMPLY WITH SPECIFICATIONS FOR:

U.S.V.B.A.

F.I.V.B.

N.C.A.A.

COURT SIZE SPECIFICATIONS FOR THE N.F.S.H.S.A. ARE 30'W x 60'L.

CENTER LINE TO BE 4" WIDE.

SPIKE LINE TO BE 10' FROM THE CENTER LINE.

SERVING AREA TO BE 10' LONG.

Jaypro Sports

976 Hartford Turnpike

Waterford, CT 06385 USA

(800)243-0533

(800)988-3363 Fax

www.jaypro.com

MODEL NO.:
PVB-1000

PRODUCT NAME:
**POWER VOLLEYBALL
COURT LAYOUT**

DRAWN BY: JA

EFFECTIVE DATE:

5-6-03

ASSEMBLY INSTRUCTIONS:

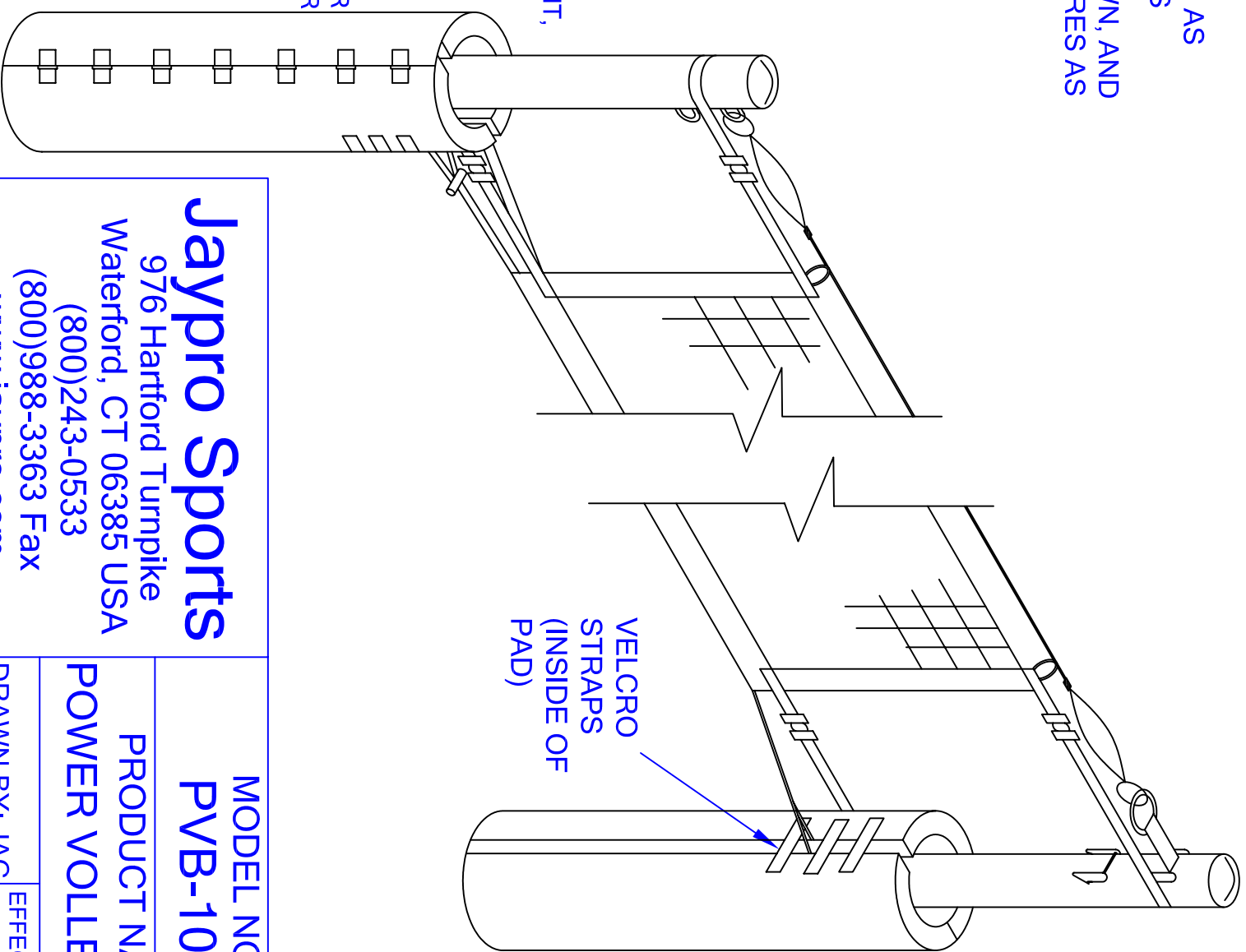
1. INSTALL POWER VOLLEYBALL SYSTEM AS DESCRIBED IN SEPERATE INSTRUCTIONS
2. PLACE PADS INTO POSITION, AS SHOWN, AND SECURELY FASTEN THE VELCRO CLOSURES AS INDICATED

CAUTION:

DO NOT USE THE POWER VOLLEYBALL SYSTEM WITHOUT THE UPRIGHT PADS

PLEASE NOTE:

- 1) FOR SAFE OPERATION AND CONTINUED HIGH PERFORMANCE FROM THIS EQUIPMENT, INSPECTION AND MAINTENANCE MUST BE PERFORMED BEFORE EACH USE
- 2) USE OF THIS EQUIPMENT OTHER THAN INTENDED, MAY BE HAZARDOUS.
- 3) ALTERATION OR MODIFICATION OF EQUIPMENT MAY BE HAZARDOUS. FOR REPAIR OR REPLACEMENT, PLEASE CALL YOUR DEALER



Jaypro Sports

976 Hartford Turnpike
Waterford, CT 06385 USA

(800)243-0533

(800)988-3363 Fax

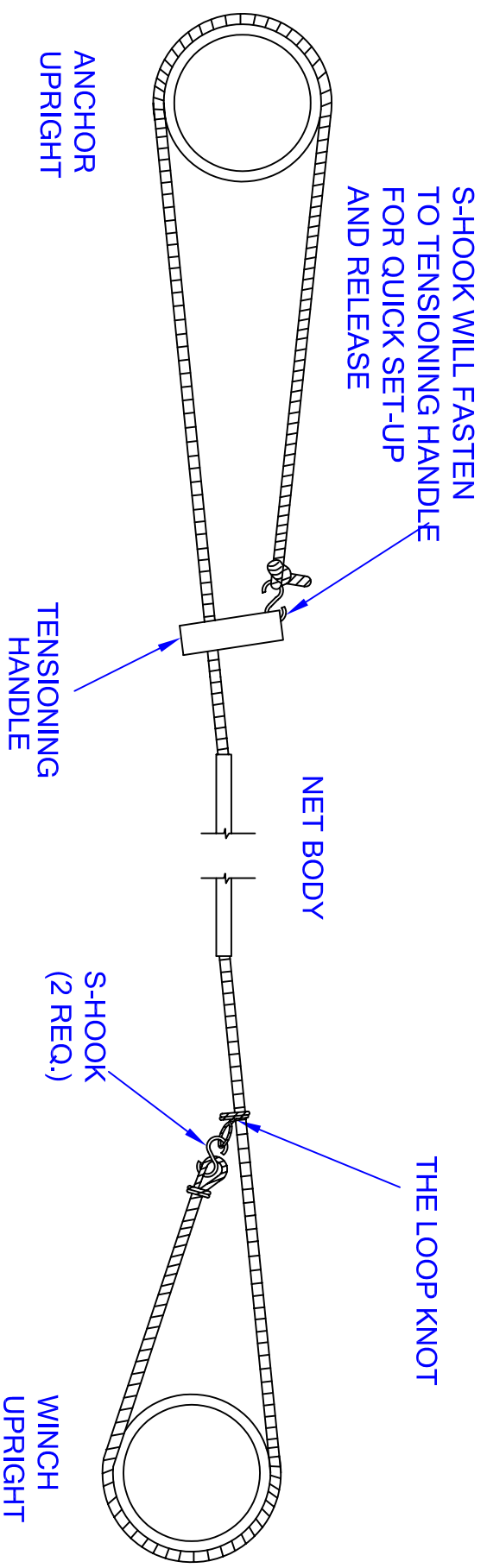
www.jaypro.com

MODEL NO.:
PVB-10P

PRODUCT NAME:
POWER VOLLEYBALL

DRAWN BY: JAC

EFFECTIVE DATE:
5-6-03



**VOLLEYBALL NET-BOTTOM CABLE
TENSIONING INSTRUCTIONS**

1 TEST POSITION THE BOTTOM CABLE AROUND THE WINCH UPRIGHT AND NOTE LOCATION OF INTERSECTION. TIE A LOOP KNOT, AS SHOWN ABOVE, THEN TIE ONE SMALL S-HOOK TO THE END OF THE CABLE AND HOOK THIS ONTO THE LOOP KNOT TO SECURE THIS END.

2. SLIP THE BOTTOM CABLE END THRU ONE SET OF HOLES IN THE TENSIONING HANDLE AND PULL CABLE AROUND THE UPRIGHT. DETERMINE THE INTERSECTION POINT AND TIE AN S-HOOK IN PLACE. CLIP THE S-HOOK THRU THE REMAINING HOLES IN THE TENSIONING HANDLE AND PULL THE HANDLE TOWARD THE NET TO APPLY TENSION TO THE BOTTOM CABLE. EXCESS CABLE CAN BE CUT OFF.

Jaypro Sports

976 Hartford Turnpike
Waterford, CT 06385 USA

(800)243-0533
(800)988-3363 Fax
www.jaypro.com

MODEL NO.:
PVB-1000

PRODUCT NAME:
BOTTOM CABLE CONFIGURATION

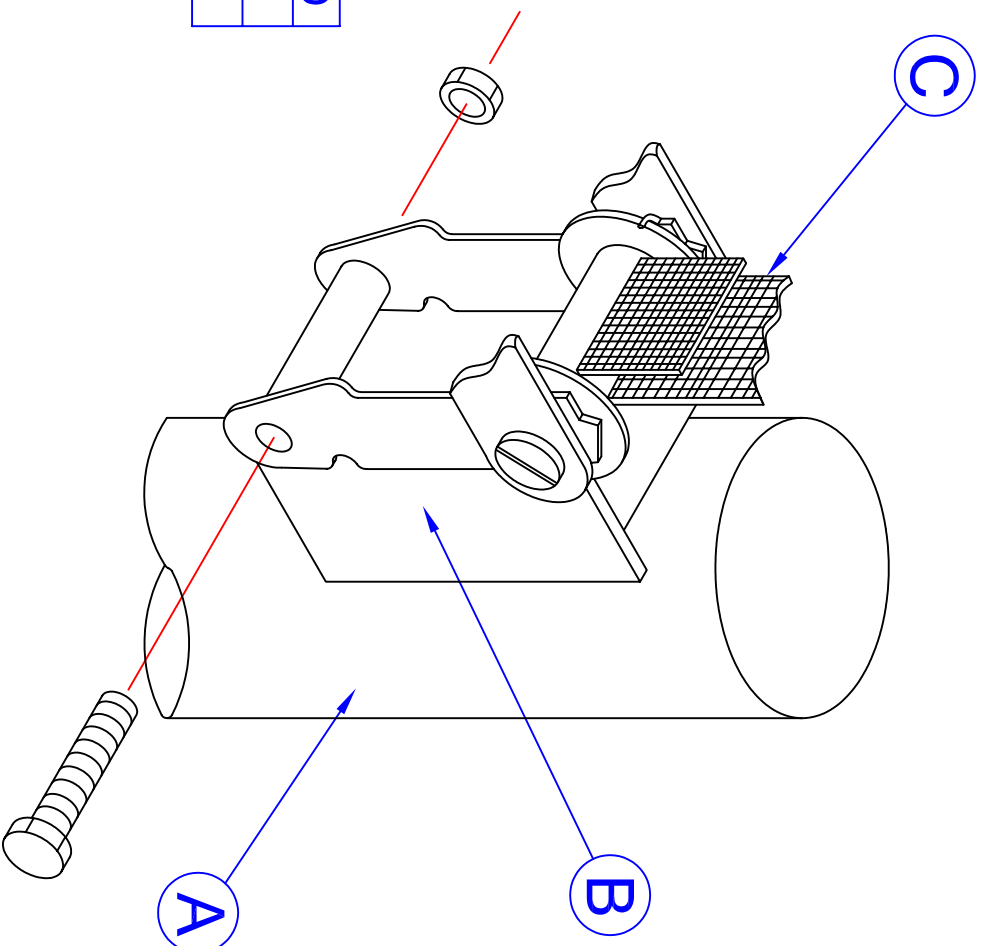
DRAWN BY: JAC EFFECTIVE DATE:
5-2-03

NOTE:

**HEX HEAD SCREW
LOCKS UNDER PIN
ON MOUNTING
BRACKET.**

LARGE BUCKLE

A	VOLLEYBALL STANDARD
B	BUCKLE
C	LEADER STRAP



BUCKLE ASSEMBLY INSTRUCTIONS

REMOVE NUT AND BOLT ASSEMBLY FROM BUCKLE (B). SLIDE BUCKLE UNDER TAB ON MOUNTING BRACKET (A). POSITION BUCKLE, INSERT BOLT AND REPLACE NUT. TIGHTEN SECURELY.

Jaypro Sports

976 Hartford Turnpike
Waterford, CT 06385 USA
(800)243-0533
(800)988-3363 Fax
www.jaypro.com

MODEL NO.:

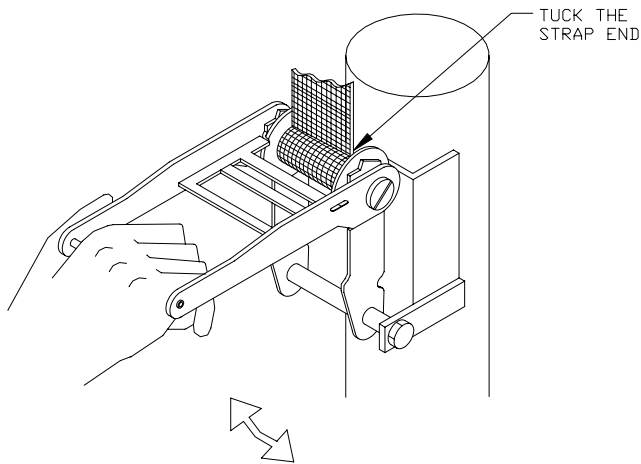
**PRODUCT NAME:
BUCKLE ASSEMBLY**

DRAWN BY: JAC

**EFFECTIVE DATE:
3-31-03**

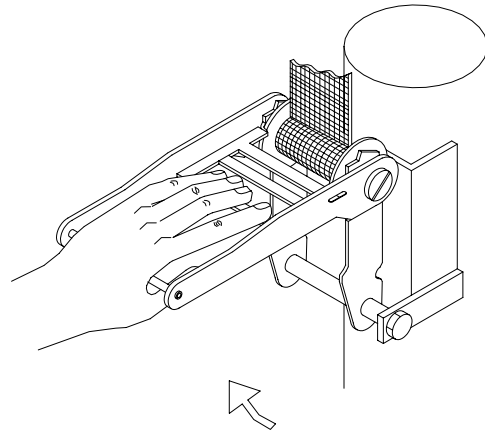
TO APPLY NET TENSION:

FEED THE LEADER STRAP THRU THE SLOT IN THE BUCKLE SHAFT AND TUCK THE END AS SHOWN. GENTLY CRANK THE HANDLE UP AND DOWN TO TENSION THE NET.



TO RELEASE NET TENSION:

HOLD BUCKLE HANDLE AS ILLUSTRATED, GRASP AND PULL THE LOCK RELEASE BAR AND RAISE THE HANDLE TO THE FULL UPWARD POSITION TO RELEASE THE TENSION.



HOW TO PROPERLY USE THE NET TENSIONING BUCKLE

THIS POWER VOLLEYBALL SYSTEM IS EQUIPPED WITH A TENSION BUCKLE PREMOUNTED ON ONE OF THE UPRIGHTS. THE BUCKLE IS USED TO APPLY TENSION TO THE TOP CABLE OF THE NET.

TO APPLY NET TENSION:

FEED THE LEADER STRAP DOWN THRU THE HORIZONTAL SLOT IN THE SHAFT OF THE BUCKLE. WRAP THE STRAP HALFWAY AROUND THE SHAFT AND TUCK THE END BETWEEN THE SHAFT AND THE STRAP TO HOLD IT IN PLACE. CRANK THE HANDLE UP AND DOWN A FEW TIMES UNTIL THE STRAP IS SECURELY WRAPPED AROUND THE SHAFT OF THE BUCKLE (APPROXIMATELY 1 ½ TO 2 REVOLUTIONS). NOTE THAT THE BUCKLE TENSIONS ON THE UP-STROKE ONLY: NOT THE DOWN-STROKE.

TO RELEASE NET TENSION:

HOLD THE BUCKLE HANDLE AS SHOWN IN THE ILLUSTRATION TO THE RIGHT, GRASP THE LOCK RELEASE BAR WITH YOUR FINGERS, PULL THE BAR TOWARD YOUR HAND AND CRANK THE HANDLE TO ITS UPPERMOST POSITION (STRAIGHT UP AND DOWN). **CAUTION!! WHEN THE TENSION RELEASES, THE LEADER STRAP AND THE VOLLEYBALL NET WILL SUDDENLY COLLAPSE. ALTHOUGH THE NOISE AND MOTION ASSOCIATED WITH THE RELEASE OF THE TENSION MAY BE SURPRISING AT FIRST, IT POSES NO DANGER TO THE USER.**

JAYPRO SPORTS

PVB-1000

LIST OF MATERIALS

<u>PIECE NO.</u>	<u>PART NO.</u>	<u>DESCRIPTION</u>	<u>QTY.</u>
1	PVB101	TOP BUCKLE UPRIGHT	1
2	PVB102	ANCHOR END UPRIGHT	1
3	PVB101A	LEADER STRAP	1
4	HM5044	TOP CABLE BUCKLE	1
5	HM5054	5/16" SNAP HOOK	1
6	PVBN-1	POWER VOLLEYBALL NET	1
7	PVBN12	VOLLEYBALL NET DOWEL	2
8	PVB-10P	POWER VOLLEYBALL PADS	2

ASSEMBLY INSTRUCTIONS

READ ALL DIRECTIONS CAREFULLY BEFORE BEGINNING ASSEMBLY

1. PLACE THE TOP WINCH UPRIGHT (1) AND THE ANCHOR END UPRIGHT (2) INTO THEIR RESPECTIVE FLOOR SLEEVES. ALIGN THE UPRIGHTS SO THE CABLE BUCKLE AND D-RINGS ARE FACING TOWARD THE INSIDE OF THE COURT.
2. PLACE THE LEADER STRAP FOR THE TOP CABLE (3) ONTO THE STRAP ROLLER AT MEN'S OR WOMEN'S NET HEIGHT. SEE "CABLE CONFIGURATION DRAWING".
3. SLIP THE NET DOWELS (7) INTO THE SIDE POCKETS ON EACH END OF THE NET. POSITION THE POWER VOLLEYBALL NET (6) BETWEEN THE TWO UPRIGHTS. CLIP THE LOOPED ENDS OF THE OVAL SNAP RINGS (5) LOCATED ON THE END OF THE LEADER STRAP (3). SEE "CABLE CONFIGURATION DRAWING".
4. SLOWLY TENSION THE TOP CABLE BY CRANKING THE BUCKLE; SEE "ILLUSTRATIONS AND SEPARATE INSTRUCTIONS ON HOW TO PROPERLY USE THE NET TENSIONING BUCKLES". CONTINUE TO TENSION THE CABLE UNTIL THE HEIGHT MEASURED AT THE CENTER OF THE NET IS WITHIN 1" OF THE OFFICIAL NET HEIGHT.
5. WRAP THE LONG ENDS OF THE NET SIDE STRAPS AROUND THE UPRIGHTS AND FASTEN THEM THROUGH THE SNAP BUCKLES LOCATED ON THE OPPOSITE SIDE. FOR BEST RESULTS, ADJUST THE SIDE STRAPS SO THAT THE VOLLEYBALL NET WILL REMAIN CENTERED WITHIN THE PLAYING AREA.

6. RAISE THE CENTER OF THE NET TO THE FULL OFFICIAL NET HEIGHT BY CRANKING THE TOP CABLE BUCKLE. ADJUST ALL NET SIDE STRAPS TO TENSION THE NET.
7. TO RELEASE THE TENSION ON THE UNIT, ALWAYS UNFASTEN THE NET SIDE STRAPS FIRST, THEN RELEASE THE TENSION ON THE TOP CABLE. SEE "ILLUSTRATIONS AND SEPARATE INSTRUCTIONS ON HOW TO PROPERLY USE THE NET TENSIONING BUCKLES". NOTE: THE RELEASE OF THE TENSION WILL CAUSE THE LEADER STRAPS AND THE VOLLEYBALL NET TO SUDDENLY RELAX. THE CABLE BUCKLE MAY "POP" WHEN THIS OCCURS BUT THIS IS EXPECTED AND IT WILL NOT DAMAGE THE EQUIPMENT OR CAUSE INJURY TO THE OPERATOR.
8. TO REMOVE THE UNIT FOR STORAGE, DISCONNECT THE NET FROM THE TWO UPRIGHTS. CAREFULLY LIFT EACH UPRIGHT FROM THE FLOOR SLEEVE TOP CAP. IMPORTANT: THE UPRIGHTS ARE HEAVY AND IT IS RECOMMENDED THAT AT LEAST TWO PEOPLE HOLD AND LIFT EACH UPRIGHT FROM THE FLOOR SLEEVE.

INSTALLATION AND USE CONSIDERATIONS

1. THIS UNIT IS DESIGNED FOR HIGH-LEVEL COMPETITION PLAY. CONSEQUENTLY, WHEN INSTALLED AND OPERATIONAL, THE UNIT IS SUBJECT TO CONSIDERABLE STRESS LOADS. IT IS ESSENTIAL TO INSPECT ALL PARTS BEFORE EACH USE.
2. DO NOT USE THIS EQUIPMENT WITHOUT THE PROTECTIVE UPRIGHT PADDING PROPERLY FASTENED IN PLACE.
3. A FEW DROPS OF LIGHT LUBRICATING OIL APPLIED PERIODICALLY TO THE MOVING PARTS ON THE CABLE BUCKLE WILL HELP ASSURE SMOOTH AND EASY OPERATION.
4. A LIGHT COATING OF LUBRICATING GREASE APPLIED TO THE INSIDE OF EACH FLOOR SLEEVE WILL MAKE THE REMOVAL OF EACH UPRIGHT EASIER.